

Welcome to Thorpe Hesley Primary School Reception!



Reception

We would like to offer a warm welcome to our school.

The following slides are to give you information about our school day.

We will give you an opportunity to ask questions at the end.

Hopefully we have everything covered but you can contact the office anytime during opening hours if you have any questions.



Class 3 Staff

Welcome to
Class 3
Thorpe Hesley Primary School



Miss Moran
Class Teacher

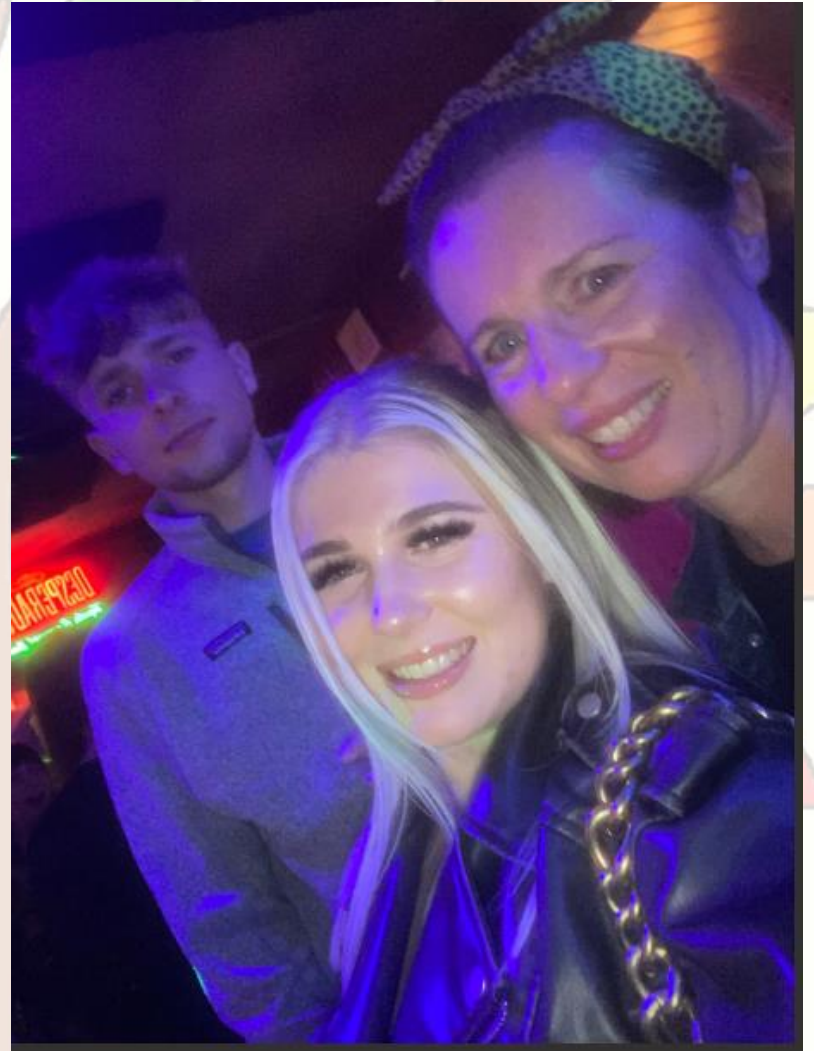


Mrs West
Teaching Assistant









Our School

- We are part of a multi- academy trust - NCLT or New Collaborative Learning Trust, made up of:
 - 3 colleges
 - 3 secondaries
 - 3 primaries



**Thorpe Hesley
Primary School**



Part of the
newcollaborative
Learning Trust
Opening doors to a brighter future

Staff to remember

Mrs Hewitt (Head Teacher)

Mrs Cullumbine (FS Leader)

Mrs Rawlinson and Mrs Lilleker (Deputy Head Teachers)

Mrs Shaw (Inclusion Lead)

Mrs Screation (School Business Manager)

Mrs Dawson, Mrs Bailey, Mrs Marshall and Mrs Durham (Office Staff)



Organisation of Foundation Classes

Class 1 - Nursery

Teacher: Mrs Oakley

EYPs: Mrs Cole and Miss Booth

TA: Miss Marriott

Class 2, 3 and 4 – Reception

Teachers: Mrs Cullumbine, Mrs Kempton-Feery and Miss Moran

TAs: Mrs West, Miss Marshall and Miss Varley



Welcome Pack: You should receive a pack of information and forms to complete before starting school. This will include:

- General information
- Safeguarding
- Health
- Paying for visits / visitors
- Special Educational Needs



The School Day

School times

Classes 2, 3 and 4 - Reception 8.45 – 3.20

Children to enter by their class door in a morning and to be collected from that door.

Children will only be released to people on the safeguarding list and staff will check.

Children need to bring their book bag daily.

They can bring a named water bottle containing water.

Milk and fruit is offered daily.

Please ensure that children have suitable (labelled) coats and hats depending on the weather.





Day

- Phonics
- Guided Reading
- Wellbeing Walk
- Literacy based activities
- Outdoors/ Continuous provision
- Dinner
- Maths
- Outdoors/Continuous provision
- Story

The School Day

- At the end of the day please stand away from the door and staff will release the children when they see you.
- Children will only be released to people on the safeguarding list and staff will check.
- Please ensure that safeguarding lists are filled in and sent to the office before your child starts school.
- If for any reason you cannot pick up your child please notify the office.

Foundation Stage Curriculum

EYFS Curriculum

Prime Areas are fundamental in support and development in all other areas.

Personal, Social and Emotional Development

Communication and Language

Physical Development

Specific Areas include essential skills and knowledge. They grow out of prime areas and provide important contexts for learning.

Literacy

Mathematics

Understanding the World

Expressive Arts and Design



Each Area of Learning is implemented through planned, purposeful play and through a mix of adult-led and child initiated activities.

Play is essential for children's development, building their confidence as they learn to explore, to think about problems and to relate to others.

In the final term of Reception, teachers complete the EYFS profile for each child. The profile provides parents and Year 1 teachers with a picture of a child's knowledge, understanding, abilities and their progress against expected levels.



Statutory Baseline Assessment –

Children will be assessed against our curriculum during the first few weeks of the term. This is done through play based activities and will help us inform our personalised teaching and learning for your child. We will discuss any concerns with parents.

School lunches

All Reception & KS1 children are entitled to free lunches (universal Free School Meal) since September 2014

Choices –

1. Hot choice 1
2. Hot choice 2
3. Jacket Potato
4. Chilled choice
5. Complete form for the start of week online – remember to include your child in the choice! Remind your child of their choice every morning.

We are a healthy school so if your child is bringing lunch from home we ask that there are no bars of chocolate or sweets and that any crisps are low fat / baked.

Please **DO NOT** send any nuts or nut based food into school as we have children with allergies.



Dinnertimes

- The children will remain with their class and the staff during dinnertime in the hall.
- There is no time limit on children eating and staff will support their needs.
- Please encourage them to practise using a knife and fork at home.
- You fill your dinner choices through the Arbor app.
- We are a healthy school so please do not send sweets and chocolate in lunch boxes.
- Children receive milk during the day and are encouraged to bring a named water bottle into school.

Uniform

- Red sweatshirt
- White or red polo style shirt or blouse, with a collar
- Black or grey school trousers or skirts
- Shoes must be plain black and not trainers
- Named wellies to be left in school
- Please do **not** buy expensive clothes for school wear.
- No jewellery, nail varnish or fashion items
- Please label all items clearly with your child's name
- You can leave a drawstring bag with a change of clothes in school if needed.
- P.E. kits will be needed from Autumn 2



Uniform and Equipment

- Children need to be in uniform daily.
- Please label all clothes with your child's full name.
- Children require a coat in school everyday. We go out in all weathers.
- Children need to learn to dress and undress independently as they will need a P.E. kit after Autumn half term.
- You are welcome to leave a change of clothes on your child's peg in case of accidents. Please ensure that this is labelled. This needs to be in a drawstring bag.
- Children can leave a named pair of wellies in school.
- Children need to bring their book bag daily with their books and reading records.
- No jewellery is allowed apart from a small pair of stud earrings. These must be removed or taped (please send this) for P.E.
- We do NOT allow children to wear nail varnish in school.
- We have lost property boxes in the classroom.



Behaviour

- We have a positive behaviour policy
- We have high expectations of good behaviour throughout school
- Good behaviour is a feature of our school and we are often complimented on the behaviour of our pupils both in and out of school
- Children receive class points, golden tickets and Golden Time for good behaviour and work.



Golden Rules

1. We are helpful and act kindly
2. We always tell the truth
3. We do not hurt each other
4. We work hard every day
5. We care for, and look after, the school and our environment
6. We listen well and don't interrupt
7. We are polite and well mannered



Attendance

- Regular attendance is vital to good progress and attainment
- Notify school daily of any absence – we operate first call system and work closely with the LA for persistent poor attendance.
- If you have any appointments during the school day you must fill an absence form via the office.
- Holidays during term time are not authorised and a leave of absence form must be completed.



Punctuality

- Children are learning as soon as they come through the door.
- The Reception day begins at 8.45. The register closes at 9 so any children arriving after 8.55 will need to report to the main office to give a reason and collect their mark.
- Our attendance policy can be found on the website.



Information



- Phone number: 01142570153
- School website: <https://www.thorpehesleyprimary.rotherham.sch.uk/> - Please check out our class pages.
- X: @thorpehesleypri – we use this to celebrate work in school.
- Class email

THP-Class2@nclt.ac.uk

THP-Class3@nclt.ac.uk

THP-Class4@nclt.ac.uk

- Please use the class email to share home learning and achievements that your child has made.
 - We will check these every week so please do not send urgent questions, please contact the office for these.
 - We hope that this will encourage children to talk to us about their home life and the things that they enjoy.
- Newsletter – we send a weekly newsletter for the whole school via Arbor. This can also be viewed on the website.
- Breakfast Club and After School Club – we offer wrap around care from 8am until 5:45pm.

Class Email

- Please use the class email to share home learning and achievements that your child has made.
- We will check these every week so please do not send urgent questions, please contact the office for these.
- We hope that this will encourage children to talk to us about their home life and the things that they enjoy.

• Website and X

- We have a class webpage that we update termly with photographs and information about our learning
- Please look at our twitter to see what we have been up to.
- Please remember to fill out the safeguarding form if you do not wish your child to be on social media.

Arbor

- Arbor –this is the app that we use to send you information and you use this to order school dinners and make payments.
- We need your email to set this up.
- This is your link to school and we send newsletters, information about the class, order dinners through this app
- If you need help setting it up then please get in touch.





Your Child

- It is **vital** that we know if your child has any specific medical or other needs before starting school. That way we can put everything in place before their arrival.
- We know starting school can be very daunting for both children and their families. Hopefully we will be able to make this a positive experience but please contact school if you have any concerns about starting.
- Please talk to your child as much as you can about school, walk past school to show them where they will be coming, try on the uniform and show them pictures from our website and class booklet.
- We focus our curriculum heavily in interaction and speaking so please encourage your child to talk in their play before starting school. For Health and Safety reasons, we do not allow dummies into the classroom so please use the summer to wean them off.
- We would like you to encourage independence before starting school. They will be expected to put their own coat on and hang it up and put their bookbag away in their drawer.
- We are available to help with toilet accidents but would like children to be able to independently use the toilet unless you notify us of any specific needs.

Medical and other needs

- It is vital that we know if your child has any specific medical, dietary or other needs before starting school. That way we can put everything in place before their arrival.
- If you need to attend a medical appointment then you need to notify the office.
- We can administer medicines that have been prescribed **3** times daily. A medicine form **MUST** be filled in for us to do this. These are filled out on your Arbor app.
- We focus our curriculum heavily in interaction and speaking so please encourage your child to talk in their play before starting school. Unfortunately they won't be able to bring dummies into the classroom.
- All inhalers must be left in school in a named bag.

Safeguarding

- It is important that you complete your safeguarding forms.
- On these forms we must know about any medical or dietary needs that your child has.
- Please inform us of your child's emergency contacts plus anyone who will be collecting them from school. If they are not on the form we will not be able to release your child to them.
- If for any reason someone not on the form has to collect your child from school we ask you to let school know as soon as possible and give a password. We can then tell your child the change in collection person and will ask that person for the password.
- We cannot release your child to anyone under the age of **14**. In any circumstances.



Entry and Exit to School

- Please note that parents are not allowed to come down the drive in cars at **any** time. This includes appointments in the day.
- Our surrounding roads can be very busy so please keep your child with you at all times.
- If possible try to walk to school or park further away and 'park and stride' to help with congestion and increase your child's health.



Home learning

- We encourage parents to develop learning at home.
- The curriculum newsletter has creative challenges.
- Over the year we will send reading books home. These will be changed weekly.
- We ask parents to share stories daily with their children.
- As your child moves through the phonics program we will be sending a little book home for them to practise their sounds.
- We will be sending number packs and games to do.
- Children will have a reading record where we ask parents to record any home reading. We ask this is done 3 times (if not more) a week. This is the child reading their levelled book or e-book.
- Your child will have a reading spine book which will be changed every fortnight. We also have a school library that runs every Tuesday and Thursday after school.

Stay and Learn

- We will be running stay and learn sessions throughout the year to inform parents of our curriculum and help them support their child.
- If you need any specific support with any areas of learning then please get in touch.
- All of our stay and learns and workshop power points are available on our school website.
- https://www.thorpehesleyprimary.rotherham.sch.uk/our_classes/foundation_stage/foundation_stage_information/policies_and_documents.html



Friends and Relatives Team

- We hold fundraising events over the year to help with school funds.
- These funds are spent on areas that need replenishing or new initiatives.
- We have an active Friends and Relatives Team who host these events.
- If this is something you feel you would like to get involved in then please speak to the office or Mrs Cullumbine for more information.



Whistle Stop Tour

- Here are some important things to remember:
 - Fill safeguarding and medical forms in.
 - Please label all clothing.
 - Children MUST have clean uniform on daily.
 - Children need to bring a named, clear plastic water bottle.
 - Enjoy your summer.



Start Date

- All Reception children will start school on Wednesday 4th September





Thank you!

We can't wait to meet you and your families.

